

PROCEEDINGS OF THE TWENTY-SEVENTH ANNUAL KECK RESEARCH SYMPOSIUM IN GEOLOGY

April 2014
Mt. Holyoke College, South Hadley, MA

Dr. Robert J. Varga, Editor
Director, Keck Geology Consortium
Pomona College

Dr. Michelle Markley
Symposium Convener
Mt. Holyoke College

Carol Morgan
Keck Geology Consortium Administrative Assistant

Christina Kelly
Symposium Proceedings Layout & Design
Office of Communication & Marketing
Scripps College

*Keck Geology Consortium
Geology Department, Pomona College
185 E. 6th St., Claremont, CA 91711
(909) 607-0651, keckgeology@pomona.edu, keckgeology.org*

ISSN# 1528-7491

The Consortium Colleges

The National Science Foundation

ExxonMobil Corporation

**KECK GEOLOGY CONSORTIUM
PROCEEDINGS OF THE TWENTY-SEVENTH ANNUAL KECK
RESEARCH SYMPOSIUM IN GEOLOGY
ISSN# 1528-7491**

April 2014

Robert J. Varga
Editor and Keck Director
Pomona College

Keck Geology Consortium
Pomona College
185 E 6th St., Claremont, CA
91711

Christina Kelly
Proceedings Layout & Design
Scripps College

Keck Geology Consortium Member Institutions:

**Amherst College, Beloit College, Carleton College, Colgate University, The College of Wooster,
The Colorado College, Franklin & Marshall College, Macalester College, Mt Holyoke College,
Oberlin College, Pomona College, Smith College, Trinity University, Union College,
Washington & Lee University, Wesleyan University, Whitman College, Williams College**

2013-2014 PROJECTS

MAGNETIC AND GEOCHEMICAL CHARACTERIZATION OF IN SITU OBSIDIAN, NEW MEXICO:

Faculty: *ROB STERNBERG*, Franklin & Marshall College, *JOSHUA FEINBERG*, Univ. Minnesota, *STEVEN SHACKLEY*, Univ. California, Berkeley, *ANASTASIA STEFFEN*, Valles Caldera Trust, and Dept. of Anthropology, University of New Mexico

Students: *ALEXANDRA FREEMAN*, Colorado College, *ANDREW GREGOVICH*, Colorado College, *CAROLINE HACKETT*, Smith College, *MICHAEL HARRISON*, California State Univ.-Chico, *MICHAELA KIM*, Mt. Holyoke College, *ZACHARY OSBORNE*, St. Norbert College, *AUDRUANNA POLLEN*, Occidental College, *MARGO REGIER*, Beloit College, *KAREN ROTH*, Washington & Lee University

TECTONIC EVOLUTION OF THE FLYSCH OF THE CHUGACH TERRANE ON BARANOF ISLAND, ALASKA:

Faculty: *JOHN GARVER*, Union College, *CAMERON DAVIDSON*, Carleton College

Students: *BRIAN FRETT*, Carleton College, *KATE KAMINSKI*, Union College, *BRIANNA RICK*, Carleton College, *MEGHAN RIEHL*, Union College, *CLAUDIA ROIG*, Univ. of Puerto Rico, Mayagüez Campus, *ADRIAN WACKETT*, Trinity University,

EVALUATING EXTREME WEATHER RESPONSE IN CONNECTICUT RIVER FLOODPLAIN ENVIRONMENT:

Faculty: *ROBERT NEWTON*, Smith College, *ANNA MARTINI*, Amherst College, *JON WOODRUFF*, Univ. Massachusetts, Amherst, *BRIAN YELLEN*, University of Massachusetts

Students: *LUCY ANDREWS*, Macalester College, *AMY DELBECQ*, Beloit College, *SAMANTHA DOW*, Univ. Connecticut, *CATHERINE DUNN*, Oberlin College, *WESLEY JOHNSON*, Univ. Massachusetts, *RACHEL JOHNSON*, Carleton College, *SCOTT KUGEL*, The College of Wooster, *AIDA OROZCO*, Amherst College, *JULIA SEIDENSTEIN*, Lafayette College

Funding Provided by:

Keck Geology Consortium Member Institutions
The National Science Foundation Grant NSF-REU 1062720
ExxonMobil Corporation

A GEOBIOLOGICAL APPROACH TO UNDERSTANDING DOLOMITE FORMATION AT DEEP SPRINGS LAKE, CA

Faculty: *DAVID JONES*, Amherst College, *JASON TOR*, Hampshire College,
Students: *KYRA BRISSON*, Hampshire College, *KYLE METCALFE*, Pomona College, *MICHELLE PARDIS*,
Williams College, *CECILIA PESSOA*, Amherst College, *HANNAH PLON*, Wesleyan Univ., *KERRY STREIFF*,
Whitman College

POTENTIAL EFFECTS OF WATER-LEVEL CHANGES ON ON ISLAND ECOSYSTEMS: A GIS SPATIOTEMPORAL ANALYSIS OF SHORELINE CONFIGURATION

Faculty: *KIM DIVER*, Wesleyan Univ.
Students: *RYAN EDGLEY*, California State Polytechnical University-Pomona, *EMILIE SINKLER*, Wesleyan University

PÃHOEHOE LAVA ON MARS AND THE EARTH: A COMPARATIVE STUDY OF INFLATED AND DISRUPTED FLOWS

Faculty: *ANDREW DE WET*, Franklin & Marshall College, *CHRIS HAMILTON*, Univ. Maryland, *JACOB BLEACHER*, NASA, GSFC, *BRENT GARRY*, NASA-GSFC
Students: *SUSAN KONKOL*, Univ. Nevada-Reno, *JESSICA MCHALE*, Mt. Holyoke College, *RYAN SAMUELS*,
Franklin & Marshall College, *MEGAN SWITZER*, Colgate University, *HESTER VON MEERSCHIEDT*, Boise State University, *CHARLES WISE*, Vassar College

THE GEOMORPHIC FOOTPRINT OF MEGATHRUST EARTHQUAKES: A FIELD INVESTIGATION OF CONVERGENT MARGIN MORPHOTECTONICS, NICOYA PENINSULA, COSTA RICA

Faculty: *JEFF MARSHALL*, Cal Poly Pomona, *TOM GARDNER*, Trinity University, *MARINO PROTTI*, *OVSICORI-UNA*, *SHAWN MORRISH*, Cal Poly Pomona
Students: *RICHARD ALFARO-DIAZ*, Univ. of Texas-El Paso, *GREGORY BRENN*, Union College, *PAULA BURGI*,
Smith College, *CLAYTON FREIMUTH*, Trinity University, *SHANNON FASOLA*, St. Norbert College,
CLAIRE MARTINI, Whitman College, *ELIZABETH OLSON*, Washington & Lee University, *CAROLYN PRESCOTT*,
Macalester College, *DUSTIN STEWART*, California State Polytechnic University-Pomona, *ANTHONY MURILLO GUTIÉRREZ*,
Universidad Nacional de Costa Rica (UNA)

HOLOCENE AND MODERN CLIMATE CHANGE IN THE HIGH ARCTIC, SVALBARD NORWAY

Faculty: *AL WERNER*, Mt. Holyoke College, *STEVE ROOF*, Hampshire College, *MIKE RETELLE*, Bates College
Students: *JOHANNA EIDMANN*, Williams College, *DANA REUTER*, Mt. Holyoke College, *NATASHA SIMPSON*,
Pomona (Pitzer) College, *JOSHUA SOLOMON*, Colgate University

Funding Provided by:
Keck Geology Consortium Member Institutions
The National Science Foundation Grant NSF-REU 1062720
ExxonMobil Corporation

Keck Geology Consortium: Projects 2013-2014
Short Contributions—Obsidian Provenance, New Mexico Project

MAGNETIC AND GEOCHEMICAL CHARACTERIZATION OF GEOREFERENCED OBSIDIAN SAMPLES FROM FOUR SOURCE AREAS IN NEW MEXICO

Faculty: ROB STERNBERG, Franklin & Marshall College

M. STEVEN SHACKLEY, Geomorphological XRF Laboratory, Albuquerque, NM,

JOSHUA M. FEINBERG, Institute for Rock Magnetism, University of Minnesota

ANASTASIA STEFFEN, Valles Caldera Trust, and Dept. of Anthropology, University of New Mexico

OBSIDIAN ARTIFACT PROVENANCE STUDY OF THE PIEDRAS MARCADAS PUEBLO, ALBUQUERQUE, NEW MEXICO

ALEXANDRA FREEMAN, The Colorado College

Research Advisor: Christian M. Schrader, The Colorado College

MAGNETIC PROPERTIES OF CERRO TOLEDO OBSIDIAN

ANDREW GREGOVICH, Colorado College

Research Advisors: Christian M. Schroder, Colorado College and Joshua M. Feinberg, University of Minnesota

GEOCHEMICAL CHARACTERIZATION OF THE MULE CREEK OBSIDIAN, NEW MEXICO

CAROLINE HACKETT, Smith College

Research Advisor: Mark Brandriss

MAGNETIC CHARACTERISTICS OF OBSIDIANS IN MULE CREEK, NM

MICHAEL BABATUNDE HARRISON, California State University, Chico

Research Advisor: Todd J. Greene

BASIC PALEOMAGNETIC PROPERTIES OF OBSIDIAN FROM THE MOUNT TAYLOR REGION OF NEW MEXICO

MICHAELA KIM, Mount Holyoke College

Research Advisor: Michelle Markley

HYSTERESIS AND LOW-TEMPERATURE MAGNETIC PROPERTIES OF MOUNT TAYLOR OBSIDIAN

ZACH OSBORNE, St. Norbert College

Research Advisor: Joshua M. Feinberg, University of Minnesota - IRM

EFFECTS OF WILDFIRE ON FLOAT OBSIDIAN CLASTS FROM THE VALLES CALDERA, NEW MEXICO

AUDRIANNA POLLEN, Occidental College

Research Advisor: Dr. Scott Bogue

INTRA AND INTER-SOURCE MAGNETIC PROVENANCING OF MULE CREEK REGIONAL SOURCE OBSIDIAN

MARGO REGIER, Beloit College

Research Advisors: James Rougvie, Beloit College and Joshua M. Feinberg, University of Minnesota

Funding Provided by:
Keck Geology Consortium Member Institutions
The National Science Foundation Grant NSF-REU 1062720
ExxonMobil Corporation

**GEOCHEMICAL VARIABILITY OF OBSIDIAN IN WESTERN NEW MEXICO WITH LABORATORY-
BASED PXRF**

KAREN ROTH, Washington and Lee University
Research Advisor: Jeffrey Rahl

Funding Provided by:
Keck Geology Consortium Member Institutions
The National Science Foundation Grant NSF-REU 1062720
ExxonMobil Corporation

BASIC PALEOMAGNETIC PROPERTIES OF OBSIDIAN FROM THE MOUNT TAYLOR REGION OF NEW MEXICO

MICHAELA KIM, Mount Holyoke College
Research Advisor: Michelle Markley

INTRODUCTION

The purpose of this study is a basic paleomagnetic analysis of obsidian from three locations in the Mount Taylor volcanic field in order to explore if paleomagnetic analysis of obsidian samples can discriminate source locations. The results of this study may be useful in the sourcing of archeological tools and artifacts. The three main obsidian sources in the Mount Taylor volcanic field are Grant's Ridge, Horace Mesa, and La Jara Mesa. The Grant's Ridge obsidian deposit was formed by a rhyolite dome which was subsequently perlitized, forming 'Apache tears' or small nodules in the perlitized, weathered matrix (Shackley 2005). The nodules at Grant's Ridge are generally larger, but less aphyric than the obsidian found at the other localities. The Grant's Ridge obsidian also contains small phenocrysts of sanidine which indicate a slower cooling time than the other two sources (Shackley). Both Horace Mesa and La Jara Mesa are plateaus of basalt that have obsidian nodules in the float/alluvium at the surface. The surface of the obsidians is more dull and weathered than the comparatively fresh nodules present at the other locality. Additionally the obsidian samples are more aphyric and lack the sanidine crystals present in the Grant's Ridge obsidians.

METHODS

The sampling methods for each of the three field sites varied slightly because the density of nodules varied at each site. For Grant's Ridge we collected samples from the perlite walls and from the float. We georeferenced a point and took samples from nearby to that GPS point. We did this all along the perlite wall

and in a few spots in the float. For Horace Mesa the nodule density was much less than Grant's Ridge, so we split into groups and sampled in transects, taking samples between successive GPS points. At each end point we took a specifically georeferenced sample which was bagged separately from the samples we collected between GPS points. La Jara Mesa had the lowest nodule density, so we collected as many samples as possible, taking down a GPS point for each sample we collected. We collected hundreds of samples, but I ended up only testing a small fraction of the samples we collected. In total I tested seventeen samples from Grant's Ridge, eight samples from La Jara Mesa, and twenty samples from Horace Mesa.

I prepared the samples using a rock saw and split some of the larger samples into halves or thirds. I abraded off all the dirt and weathered surfaces to make sure that contamination wouldn't alter the readings. I then measured susceptibility and alternating-field (AF) demagnetization on my samples in the paleomagnetism lab run by Laurie Brown at the University of Massachusetts-Amherst. Susceptibility of each sample was measured using a Sapphire Instruments Susceptibility Meter and then the numbers were normalized using a standard density of obsidian of 2.6 g/cc. I measured the natural remnant magnetization (NRM) for all of the samples using a 2G Enterprises 3-axis Cryogenic Magnetometer, Model 755, and then proceeded to perform AF demagnetization on them at various steps: 10, 20, 30, 40, 50, 60, 80, and 100 mT. The Molspin Limited Alternating Field Demagnetizer was used to demagnetize the samples at the various intensities and then the cryogenic magnetometer was used to measure the samples. Once I had all of the data, I uploaded the files to Excel and used it to

produce $J/J(0)$ (the remaining remanence at each step normalized by the NRM) vs. demagnetization step plots, susceptibility vs. NRM plots, and plots of the variation of the susceptibility in relation to the sample numbers.

RESULTS

Figure 1 shows the plot of NRM vs. susceptibility (cc/g) for all three sites. Most of the points plot in the same general area. There are two outliers from La Jara Mesa which have unusually high NRMs when compared to all the other samples. There is also one outlier from Horace Mesa which has a slightly stronger NRM than the other samples. The AF demagnetization plots for all three localities showed at least some grouping of the samples' curves. Grant's Ridge appeared to have two to three groupings of curves with some more unusual curves that went between the groups (Fig. 2). The graph overall has a lot of noise, not making the groupings distinct. Some of the curves on the Grant's Ridge plot are steady, shallow curves and others are steeper in the beginning and then fall off gradually. The samples for Horace Mesa had one main cluster where all the samples curves were similar in shape and slope. There were three or four curves that were outside this main grouping, showing a steep decline initially and then levelling off to a more gradual curve (Fig. 3). There is also a fair amount of variation in this data even in the main groupings of the curves. The samples for La Jara Mesa grouped only into one group with some outliers (Fig. 4). The outlier curves on the AF demagnetization plots belong to the same samples which are outliers on the NRM vs. Susceptibility plot.

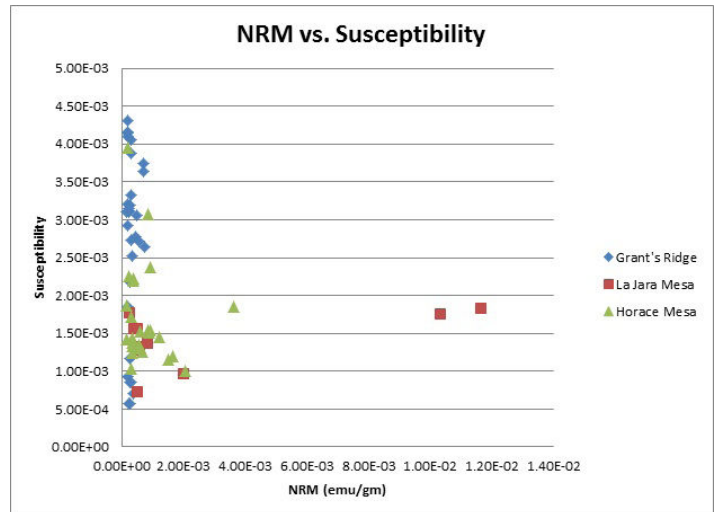


Figure 1 shows the normalized susceptibility (in cc/g) plotted against the measured NRM values (in emu/g) of every sample from each of the three localities. The diamonds indicate Grant's Ridge samples, the squares are La Jara Mesa samples, and the triangles are Horace Mesa samples.

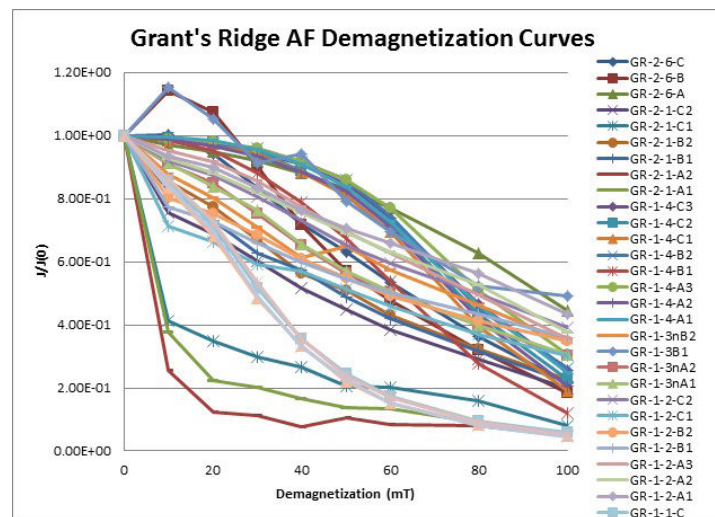


Figure 2 shows the demagnetization curves for all of the samples tested for Grant's Ridge. The plot is the remaining remanence at each step normalized by the NRM vs. the demagnetization step in mT.

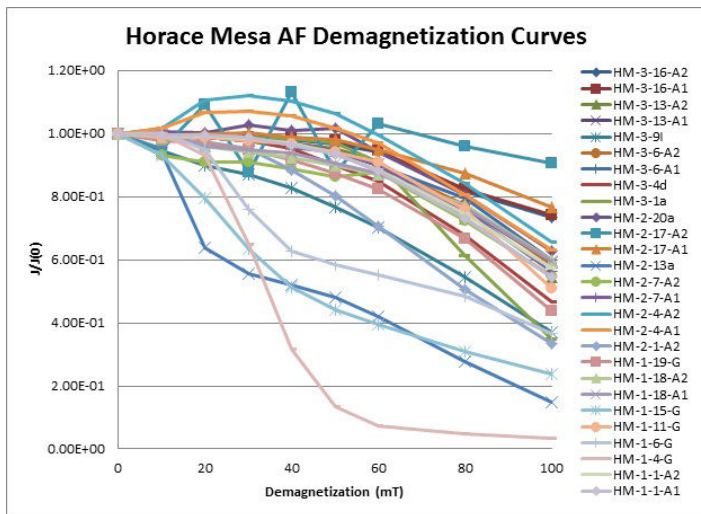


Figure 3 shows the demagnetization curves for all of the samples tested for Horace Mesa. The plot is the remaining remanence at each step normalized by the NRM vs. the demagnetization step in mT.

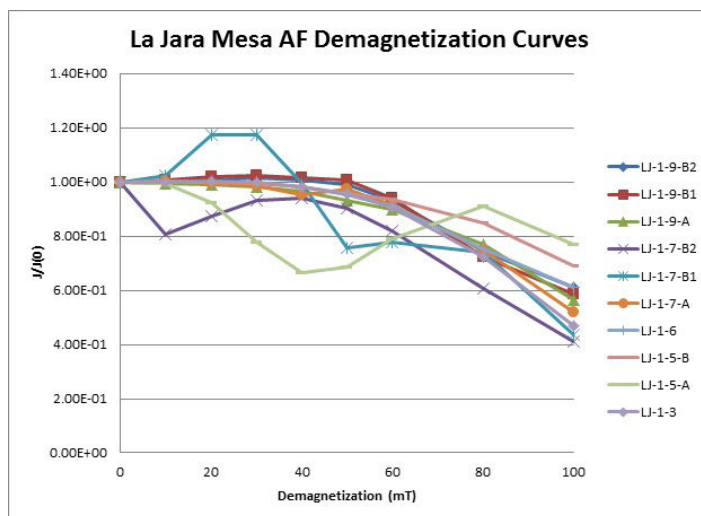


Figure 4 shows the demagnetization curves for all of the samples tested for La Jara Mesa. The plot is the remaining remanence at each step normalized by the NRM vs. the demagnetization step in mT.

CONCLUSIONS

All three of the localities at Mount Taylor show some grouping in their AF demagnetization plots, but there is generally a lot of noise, making differentiating between the different groupings rather difficult. The amount of variability in each of the plots in general does not make a strong case for intra-flow variations. The susceptibility does not show any distinguishable variation between the three different localities. The outliers correspond more to unusual samples than to either inter or intra flow variations. In general the data do not really show very distinct inter and intra flow variations.

ACKNOWLEDGEMENTS

I would like to thank everyone who helped me with any aspect of this project and the research it entailed. I am especially grateful for Laurie Brown who allowed me to work in her Paleomagnetism lab and helped me with graphing and interpreting my data. I would also like to thank Rob Sternberg, Joshua Feinberg, and Steve Shackley who led my summer project and were invaluable resources. Thanks to the Keck Consortium as well for funding my project and allowing for this awesome experience.

REFERENCES

Shackley, M. Steven. *Obsidian: Geology and Archaeology in the North American Southwest*. First ed. Tucson, AZ: The University of Arizona Press, 2005. Print.